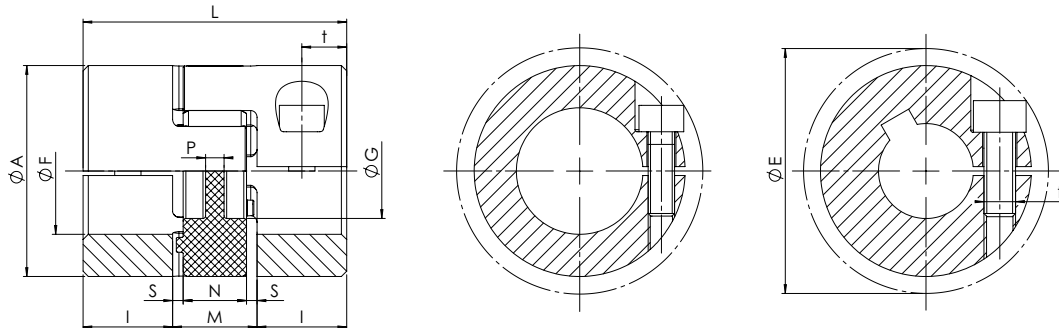


“MC” execution with clamp hubs - compact execution

Compact version with reduced overall length. They guarantee the same performances as the normal version with reduced overall dimensions.



Size	F min [mm]	F max [mm]	C	Ms [Nm]	n _{max} [min ⁻¹]	A [mm]	L [mm]	I [mm]	M [mm]	N [mm]	S [mm]	P [mm]	t [mm]	E [mm]
ALUMINUM HUBS														
7	3	7	M2	0,6	40.000	14	18	5	8	6	1,0	6	2,5	16,6
9	4	10	M2,5	1,0	28.000	20	24	7	10	8	1,0	2	3,5	21,3
12	4	12	M3	1,4	22.000	25	26	7	12	10	1,0	3	3,5	26,2
14	6	16 ⁽¹⁾	M4	2,9	19.000	30	32	9,5	13	10	1,5	2	4,8	30,5
19/24	10	24 ⁽¹⁾	M6	11,0	14.000	40	50	17	16	12	2,0	3,5	8,5	45,0 ⁽¹⁾
24/28	10	32	M6	11,0	10.600	55	54	18	18	14	2,0	4	9,0	57,5
28/38	14	35	M8	25,0	8.500	65	62	21	20	15	2,5	5,2	10,5	69,0
38/45	18	45	M10	49,0	7.100	80	76	26	24	18	3,0	5,6	13,0	86,0

⁽¹⁾ Size 14 up to bore Ø screw 12 M4, over screw M3. size 19/24 up to bore Ø 20 screw M6, over screw M5 (Ø E= 46,7 mm)

Size	Recommended M coupling Type Hub Bore Dia. [mm] and Transmissible Torque [Nm], valid for shaft tolerances k6																										
	3	4	5	6	7	8	9	10	11	12	14	15	16	18	19	20	22	24	25	28	30	32	35	38	40	42	45
7	0,8	0,9	1,0	1,0	1,1																						
9		2,1	2,2	2,3	2,5	2,6	2,7	2,8																			
12		3,4	3,6	3,8	3,9	4,1	4,3	4,4	4,6	4,8																	
14				7,4	7,7	8,0	8,3	8,6	8,9	9,2	5,8	6,0	6,1														
19/24							25,1	25,8	26,5	27,1	28,5	29,2	29,9	31,2	31,9	32,6	25,4	26,3									
24/28								23	25	27	32	34	36	41	43	45	50	54	57	63	68	72					
28/38											58	62	66	75	79	83	91	100	104	116	124	133	145				
38/45														119	125	132	145	158	165	184	198	211	230	250	263	277	296

Order form

Hub

GESMC 24/28 F22

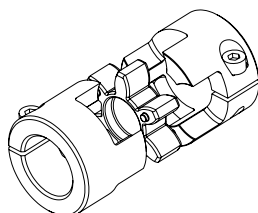
GESMC: hub TRASCO® ES execution with clamp hubs - compact execution

Size

F...: bore diameter

n_{max} Maximum rpm

min⁻¹



Technical characteristics

The following technical characteristics apply to all types of TRASCO® ES couplings.

When using the M, A and AP versions, check the torque values given in the table against the allowable hub transmission values for the respective versions given in the pertinent sections.

TRASCO® ES couplings can withstand axial, radial, and angular misalignment.

Even after operating for an extended period with a misalignment, there is still zero backlash because the elastic element is only stressed by pressure loads.

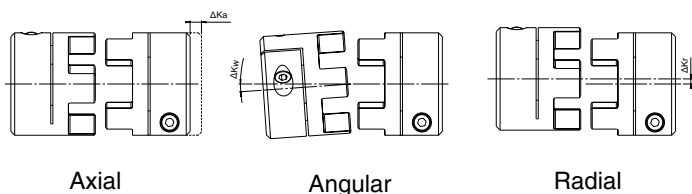
When an application causes a high degree of misalignment, a double flexing type coupling can be provided which avoids the formation of reaction forces.

Please contact our Engineering Office.

Size	Spider hardness	Performances		Spider stiffness			Misalignments		
	Shore color	T _{KN} [Nm]	T _{Kmax} [Nm]	C _T stat. [Nm/rad]	C _T din. [Nm/rad]	C _r [N/mm]	ΔK _a [mm]	ΔK _r [mm]	ΔK _w [°]
7	80 Sh A (Blue)	0,7	1,4	8	26	114	0,6	0,15	1,1
	92 Sh A (yellow)	1,2	2,4	14	43	219	0,6	0,10	1,0
	98 Sh A (red)	2	4	22	69	421	0,6	0,10	0,9
9	80 Sh A (Blue)	1,8	3,6	16	52	125	0,8	0,20	1,1
	92 Sh A (yellow)	3	6	29	95	262	0,8	0,15	1,0
	98 Sh A (red)	5	10	55	155	518	0,8	0,10	0,9
	64 Sh D (green)	6	12	75	225	740	0,8	0,08	0,8
12	80 Sh A (Blue)	3	6	85	250	275	0,9	0,20	1,1
	92 Sh A (yellow)	5	10	165	480	470	0,9	0,15	1,0
	98 Sh A (red)	9	18	240	720	845	0,9	0,08	0,9
	64 Sh D (green)	12	24	330	980	1200	0,9	0,05	0,8
14	80 Sh A (Blue)	4	8	60	180	153	1,0	0,21	1,1
	92 Sh A (yellow)	8	15	115	344	336	1,0	0,15	1,0
	98 Sh A (red)	13	25	170	513	604	1,0	0,09	0,9
	64 Sh D (green)	16	32	235	702	856	1,0	0,06	0,8
19/24	80 Sh A (Blue)	5	10	370	1120	740	1,2	0,15	1,1
	92 Sh A (yellow)	10	20	820	1920	1260	1,2	0,10	1,0
	98 Sh A (red)	17	34	990	2350	2210	1,2	0,06	0,9
	64 Sh D (green)	21	42	2500	3800	2970	1,2	0,04	0,8
24/28	80 Sh A (Blue)	17	34	860	1390	840	1,4	0,18	1,1
	92 Sh A (yellow)	35	70	2.300	5.130	1.900	1,4	0,14	1,0
	98 Sh A (red)	60	120	3.700	8.130	2.940	1,4	0,10	0,9
	64 Sh D (green)	75	150	5.000	11.000	3.700	1,4	0,07	0,8
28/38	80 Sh A (Blue)	46	92	1.370	2.350	990	1,5	0,20	1,1
	92 Sh A (yellow)	95	190	3.800	7.270	2.100	1,5	0,15	1,0
	98 Sh A (red)	160	320	4.200	10.800	3.680	1,5	0,11	0,9
	64 Sh D (green)	200	400	10.000	20.000	4.400	1,5	0,08	0,8
38/45	80 Sh A (Blue)	95	190	3.000	6.100	1.400	1,8	0,22	1,1
	92 Sh A (yellow)	190	380	5.600	12.000	2.900	1,8	0,17	1,0
	98 Sh A (red)	325	650	8.140	21.850	5.040	1,8	0,12	0,9
	64 Sh D (green)	405	810	25.000	40.000	6.500	1,8	0,09	0,8
42	80 Sh A (Blue)	130	270	4.500	9.600	1.950	2,0	0,24	1,1
	92 Sh A (yellow)	265	530	9.800	20.500	4.100	2,0	0,19	1,0
	98 Sh A (red)	450	900	15.180	34.200	5.940	2,0	0,14	0,9
	64 Sh D (green)	560	1.120	37.000	70.000	7.300	2,0	0,10	0,8
48	80 Sh A (blue)	150	300	5.500	11.200	2.100	2,1	0,27	1,1
	92 Sh A (yellow)	310	620	12.000	22.800	4.500	2,1	0,23	1,0
	98 Sh A (red)	525	1.050	16.600	49.400	6.820	2,1	0,16	0,9
	64 Sh D (green)	655	1.310	57.000	100.000	8.300	2,1	0,11	0,8
55	80 Sh A (blue)	200	400	6.000	11.000	1.500	2,2	0,28	1,1
	92 Sh A (yellow)	410	820	13.000	23.100	3.200	2,2	0,24	1,0
	98 Sh A (red)	685	1.370	24.000	63.400	7.100	2,2	0,17	0,9
	64 Sh D (green)	825	1.650	100.000	130.000	9.200	2,2	0,12	0,8
65	92 Sh A (yellow)	625	1.250	23.500	35.000	6.410	2,6	0,25	1,0
	98 Sh A (red)	900	1.800	48.000	71.500	6.620	2,6	0,18	0,9
	64 Sh D (green)	1.040	2.080	118.000	19000	8850	2,6	0,13	0,8
75	98 Sh A (red)	1.920	3.840	79.150	150.450	8.650	3,0	0,21	0,9
	64 Sh D (green)	2.400	4.800	182.000	315.000	12.000	3,0	0,15	0,8

All the technical data in the catalogue are valid for rotation speeds of 1500 rpm and a working temperature of 30 °C. For linear speed over 30 m/s, dynamic balancing is recommended.

Misalignments



T _{KN}	Coupling nominal torque	Nm
T _{Kmax}	Coupling maximum torque	Nm
C _T	Torsional rigidity	Nm/rad
C _r	Radial stiffness	N/mm
ΔK _a	Maximum axial misalignment	mm
ΔK _r	Maximum radial misalignment	mm
ΔK _w	Maximum angular misalignment	°