

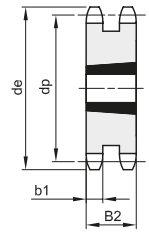
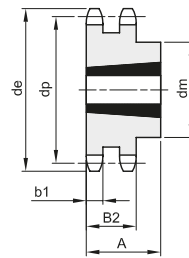
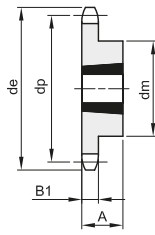
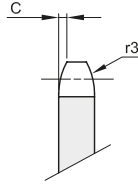


PIGNONI PER BUSSOLA CONICA - DIN 8187 - ISO 606

SPROCKETS FOR TAPER BUSHES - DIN 8187 - ISO 606

3/4" x 7/16"
19,05 x 11,68 mm
 Rullo 12,07 mm
12B - 1 - 2 - 3

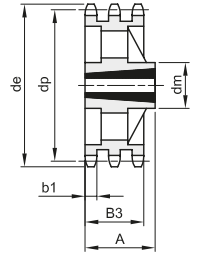
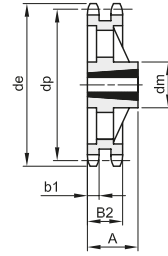
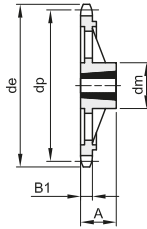
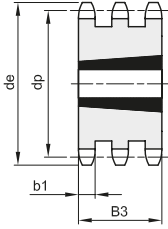
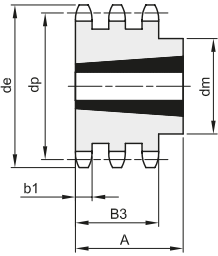
B1	B2	B3	b1	C	r3
11,1	30,3	49,8	10,8	2	19



1

2

3



4

5

6

7

8

Materiale: Acciaio C45 / *Materiale: Ghisa EN-GJL-200

Z	de	dp	semplici					doppi					tripli								
			codice	dm	A	Bussola	Tipo	Kg.	codice	dm	A	Bussola	Tipo	Kg.	codice	dm	A	Bussola	Tipo	Kg.	
13	87,8	79,60	381360013	60	25	1210	1	0,35													
14	93,8	85,61	381360014	67	25	1610	1	0,40													
15	99,8	91,62	381360015	70	25	1610	1	0,44	382360015	30,3	1610	3	0,68	383360015	49,8	1615	5	1,11			
16	105,8	97,65	381360016	71	25	1610	1	0,53	382360016	30,3	1610	3	0,89								
17	111,9	103,67	381360017	76	25	1610	1	0,66	382360017	30,3	1610	3	1,14	383360017	49,8	1615	5	1,75			
18	117,9	109,71	381360018	90	32	2012	1	0,86	382360018	90	32	2012	2	1,18							
19	123,9	115,73	381360019	90	32	2012	1	0,94	382360019	90	32	2012	2	1,24	383360019	49,8	2012	5	1,99		
20	130,0	121,78	381360020	90	32	2012	1	1,04	382360020	108	44	2517	2	1,40							
21	136,0	127,81	381360021	102	44	2517	1	1,24	382360021	108	44	2517	2	1,68	383360021	49,8	2517	5	2,09		
22	142,0	133,86	381360022	108	44	2517	1	1,60	382360022	108	44	2517	2	1,99							
23	148,1	139,90	381360023	108	44	2517	1	1,70	382360023	108	44	2517	2	2,24	383360023	49,8	2517	5	3,00		
24	154,1	145,94	381360024	108	44	2517	1	1,81	382360024	108	44	2517	2	2,54							
25	160,2	151,99	381360025	108	44	2517	1	1,93	382360025	108	44	2517	2	2,87	383360025	49,8	2517	5	3,98		
26	166,2	158,04	381360026	108	44	2517	1	2,04	382360026	108	44	2517	2	3,17							
27	172,3	164,09	381360027	108	44	2517	1	2,14	382360027	108	44	2517	2	3,55	383360027	140	51	3020	4	3,90	
28	178,3	170,13	381360028	108	44	2517	1	2,37	382360028	108	44	2517	2	4,10							
30	190,4	182,24	381360030	108	44	2517	1	2,60	382360030	108	44	2517	2	4,62	383360030	140	51	3020	4	5,64	
38	238,9	230,69	381360038	108	44	2517	1	3,93	382360038	140	51	3020	2	8,11	383360038	140	51	3020	4	11,58	
45	283,2	273,10	381360045	124	44	2517	1	5,52													
57*	355,9	345,81	381360057	124	44	2517	6	6,48	382360057	160	51	3020	7	10,28	383360057	160	51	3020	8	13,23	
76*	471,1	460,99	381360076	124	44	2517	6	9,71	382360076	160	51	3020	7	15,24							