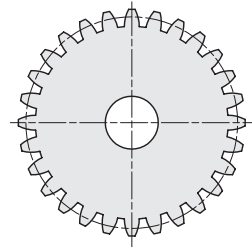
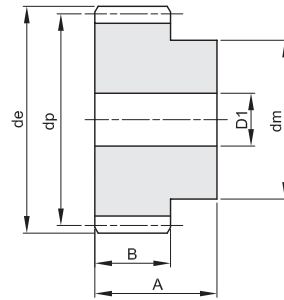
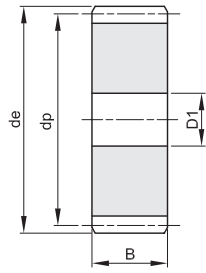




## RUOTE DENTATE CILINDRICHE IN ACCIAIO INOX CYLINDRICAL GEARS IN STAINLESS STEEL

**MODULO 3**  
ANGOLO DI PRESSIONE 20°

A	B
50	30



Materiale: INOX AISI 303

Z	codice	de	dp	dm	D1	Kg.
12	403030012	42,0	36,0	27	12	0,28
15	403030015	51,0	45,0	35	12	0,47
20	403030020	66,0	60,0	45	14	0,84
24	403030024	78,0	72,0	50	16	1,18
25	403030025	81,0	75,0	60	16	1,39
30	403030030	96,0	90,0	60	16	1,85
40	403030040	126,0	120,0	80	20	3,31
50	403030050	156,0	150,0		20	4,06
60	403030060	186,0	180,0		20	5,89

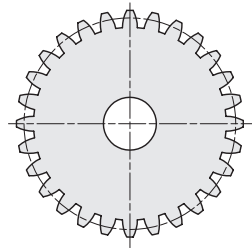
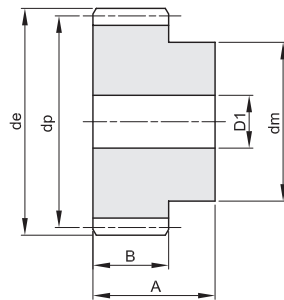
Z	codice	de	dp	dm	D1	Kg.



## RUOTE DENTATE CILINDRICHE IN ACCIAIO INOX CYLINDRICAL GEARS IN STAINLESS STEEL

**MODULO 4**  
ANGOLO DI PRESSIONE 20°

A	B
60	40



Materiale: INOX AISI 303

Z	codice	de	dp	dm	D1	Kg.
12	403040012	56,0	48,0	35	14	0,63
13	403040013	60,0	52,0	40	14	0,78
14	403040014	64,0	56,0	45	14	0,93
15	403040015	68,0	60,0	45	14	1,05
20	403040020	88,0	80,0	60	16	1,90
24	403040024	104,0	96,0	75	20	2,79
25	403040025	108,0	100,0	75	20	2,98
30	403040030	128,0	120,0	75	20	4,06

Z	codice	de	dp	dm	D1	Kg.