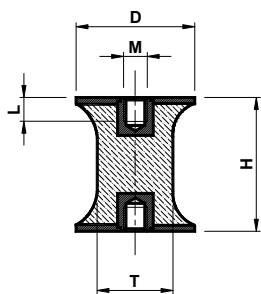




Waisted Bobbins: rubber / stainlesssteel – Type: **CTX** / *Antivibrante Sgolato: gomma / inox – Tipo: CTX*

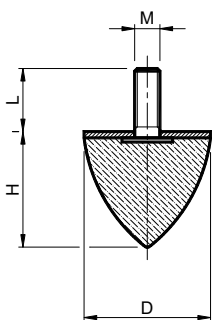



 Antivibration mounts made by rubber and steel parts
MATERIALS metal components are in stainless steel
NR/SBR rubber compound
SHORE 55° +/-5°
USE female-female


 *Antivibranti gomma-metallo*
MATERIALI parti metalliche sono inox
Parti in gomma mescola NR/SBR
SHORE 55° +/-5°
IMPIEGO femmina-femmina

Type Tipo	Cod. N°	D	H	L	T	M
CTX 10-10	AV002487	10	10	4	8	M4
CTX 20-30	AV002490	20	30	6	14	M6
CTX 30-20	AV002493	30	20	8	25	M8
CTX 40-30	AV002496	40	30	8	33	M8
CTX 40-48	AV002497	40	48	8	20	M8
CTX 50-30	AV002500	50	30	10	41	M10
CTX 60-60	AV002503	60	60	10	49	M10
CTX 70-53	AV002506	70	53	10	45	M10
CTX 75-40	AV002509	75	40	12	54	M12
CTX 100-55	AV002512	100	55	18	80	M16

Conical Bobbins: rubber / stainlesssteel – Type: **CKX** / *Antivibrante Conico: gomma / inox – Tipo: CKX*



 Antivibration mounts made by rubber and steel parts
MATERIALS metal components are in stainless steel
NR/SBR rubber compound
SHORE 55° +/-5°
USE male-rubber foot

 *Antivibranti gomma-metallo*
MATERIALI parti metalliche sono inox
Parti in gomma mescola NR/SBR
SHORE 55° +/-5°
IMPIEGO maschio-piede antivibrante

Type Tipo	Cod. N°	D	H	G	M
CKPX 10-10	AV002622	10	10	12	M5
CKPX 15-15	AV002626	15	15	10	M5
CKPX 20-15	AV002631	20	15	18	M6
CKPX 20-24	AV002632	20	24	18	M6
CKPX 25-15	AV002637	25	15	18	M6
CKPX 25-20	AV002638	25	20	10	M6
CKPX 30-30	AV002643	30	30	20	M8
CKPX 30-36	AV002644	30	36	20	M8
CKPX 35-40	AV002649	35	40	20	M8

Type Tipo	Cod. N°	D	H	G	M
CKPX 50-50	AV002654	50	50	36	M8
CKPX 50-58	AV002655	50	58	28	M10
CKPX 50-61	AV002656	50	61	26	M8
CKPX 50-67	AV002657	50	67	36	M8
CKPX 70-60	AV002662	70	60	35	M12
CKPX 75-89	AV002667	75	89	37	M12
CKPX 95-80	AV002672	95	80	42	M16
CKPX 115-136	AV002677	115	136	43	M16