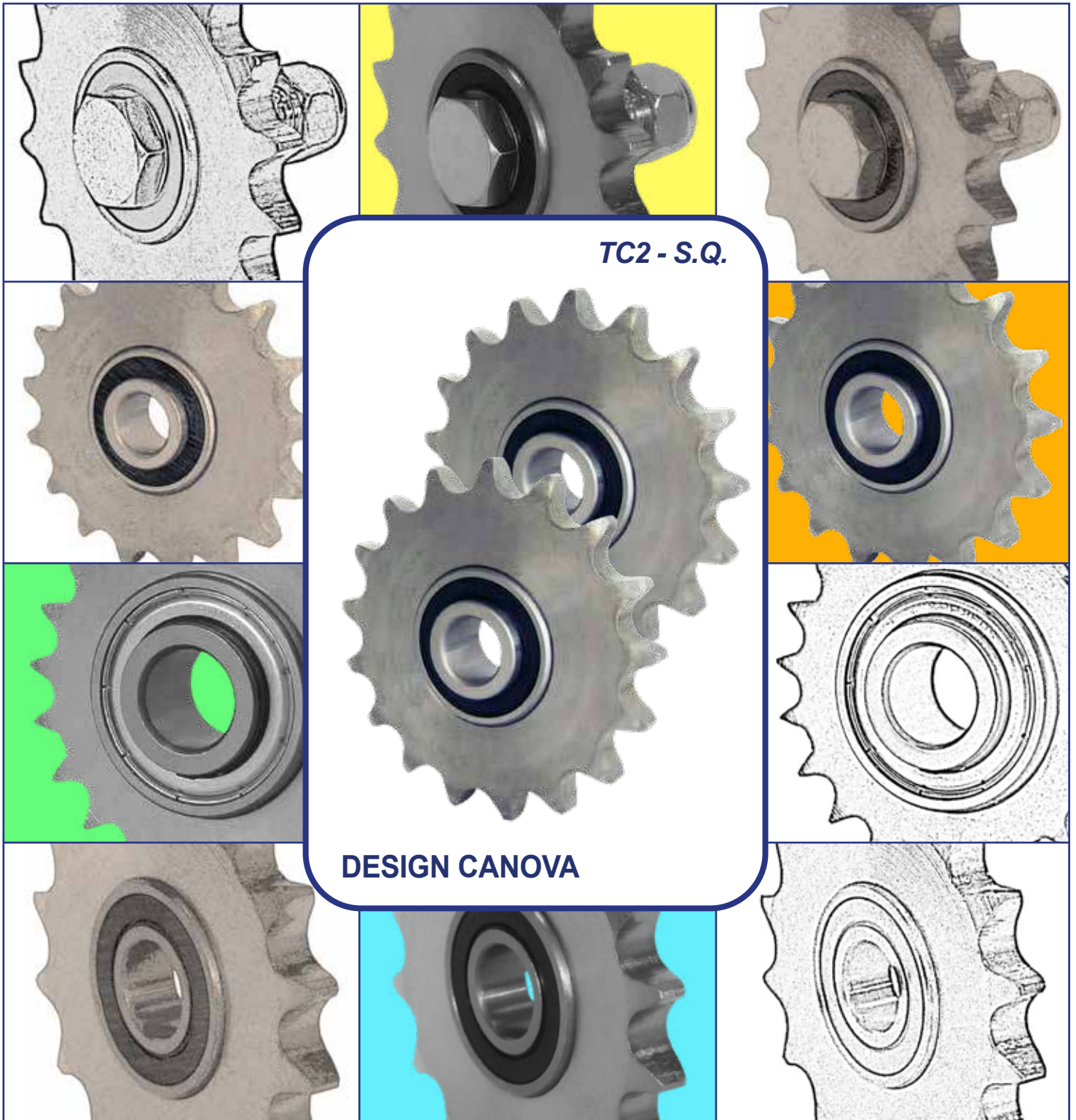
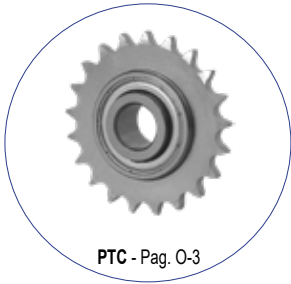


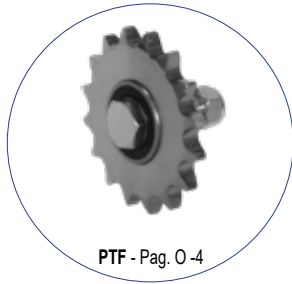
PTC - PTF - PTX

CHAIN TIGHTENER PINIONS

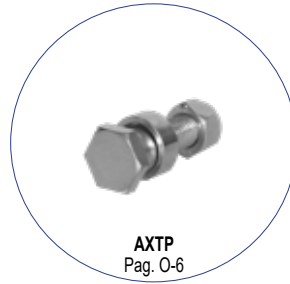




PTC - Pag. 0-3



PTF - Pag. 0-4



AXTP
Pag. 0-6



PF - Pag. 0-6

ANTICORROSIVE

TECNIDEA CIDUE
S.r.l.

ANTICORROSIVE

NEW


PTX

Stainless steel idler sprockets

www.tecnideacidue.com



PTX - Pag. 0-5

 **INNOVATIVE**
Idler sprocket consists of a stainless steel crown, installed on stainless steel bearings.

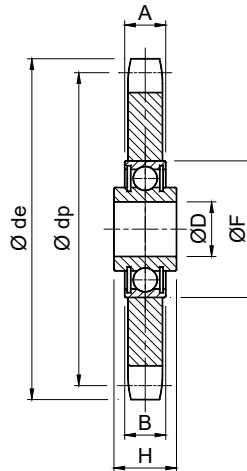
 **INNOVATIVO**
Pignone in acciaio INOX, montato su cuscinetti INOX a base maggiorata.

Type - *Tipo*: PTC

USE Chain tightener pinions
Pignoni tendicatena

 **MATERIALS** Steel.
TREATMENTS Zinc plated.

 **MATERIALI** Acciaio.
TRATTAMENTI Zincatura.

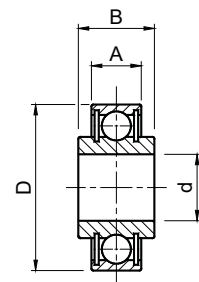


| Type <i>Tipo</i> | Cod. N° | Chain <i>Catena</i> | Z | Øde | Ødp | A | B | ØD | ØF | H | Weight <i>Peso</i> (kg) |
|---------------------|----------|------------------------|----|-------|--------|------|------|--------------------------------------|----|------|----------------------------|
| PTC 1-21 | TB001195 | 3/8" x 7/32" | 21 | 68.0 | 63.90 | 5.3 | 12 | 16 ^{+0.26} _{+0.13} | 40 | 18.3 | 0.17 |
| PTC 2-14 | TB001216 | 1/2" x 5/16" | 14 | 61.9 | 57.07 | 7.2 | 12 | 16 ^{+0.26} _{+0.13} | 40 | 18.3 | 0.15 |
| PTC 2-15 | TB001205 | 1/2" x 5/16" | 15 | 66.8 | 61.09 | 7.2 | 12 | 16 ^{+0.26} _{+0.13} | 40 | 18.3 | 0.16 |
| PTC 2-16 | TB001196 | 1/2" x 5/16" | 16 | 69.5 | 65.10 | 7.2 | 12 | 16 ^{+0.26} _{+0.13} | 40 | 18.3 | 0.18 |
| PTC 2-17 | TB001175 | 1/2" x 5/16" | 17 | 74.0 | 69.11 | 7.2 | 12 | 16 ^{+0.26} _{+0.13} | 40 | 18.3 | 0.21 |
| PTC 2-18 | TB001197 | 1/2" x 5/16" | 18 | 77.8 | 73.14 | 7.2 | 12 | 16 ^{+0.26} _{+0.13} | 40 | 18.3 | 0.23 |
| PTC 3-14 | TB001198 | 5/8" x 3/8" | 14 | 78.0 | 71.34 | 9.1 | 12 | 16 ^{+0.26} _{+0.13} | 40 | 18.3 | 0.24 |
| PTC 3-15 | TB001215 | 5/8" x 3/8" | 15 | 83.0 | 76.36 | 9.1 | 12 | 16 ^{+0.26} _{+0.13} | 40 | 18.3 | 0.28 |
| PTC 3-16 | TB001176 | 5/8" x 3/8" | 16 | 88.3 | 81.37 | 9.1 | 12 | 16 ^{+0.26} _{+0.13} | 40 | 18.3 | 0.34 |
| PTC 3-17 | TB001199 | 5/8" x 3/8" | 17 | 93.0 | 86.39 | 9.1 | 12 | 16 ^{+0.26} _{+0.13} | 40 | 18.3 | 0.36 |
| PTC 4-13 | TB001204 | 3/4" x 7/16" | 13 | 87.5 | 79.59 | 11.1 | 12 | 16 ^{+0.26} _{+0.13} | 40 | 18.3 | 0.42 |
| PTC 4-14 | TB001177 | 3/4" x 7/16" | 14 | 93.8 | 85.61 | 11.1 | 12 | 16 ^{+0.26} _{+0.13} | 40 | 18.3 | 0.44 |
| PTC 4-15 | TB001200 | 3/4" x 7/16" | 15 | 99.8 | 91.63 | 11.1 | 12 | 16 ^{+0.26} _{+0.13} | 40 | 18.3 | 0.46 |
| PTC 5-12 | TB001201 | 1" x 17.02mm | 12 | 109.0 | 98.14 | 16.2 | 14 | 20 ^{+0.10} _{-0.00} | 47 | 17.7 | 0.74 |
| PTC 6-13 | TB001202 | 1"1/4 x 3/4" | 13 | 147.8 | 132.65 | 18.5 | 15 | 25 ^{+0.00} _{-0.01} | 52 | 21.0 | 1.60 |
| PTC 7-11/20 | TB001203 | 1"1/2 x 1" | 11 | 149.0 | 135.21 | 24.1 | 30.0 | 20 ^{+0.00} _{-0.01} | 52 | 30.0 | 2.07 |
| PTC 7-11/25 | TBA01203 | 1"1/2 x 1" | 11 | 149.0 | 135.21 | 24.1 | 30.0 | 25 ^{+0.00} _{-0.01} | 52 | 30.0 | 2.09 |

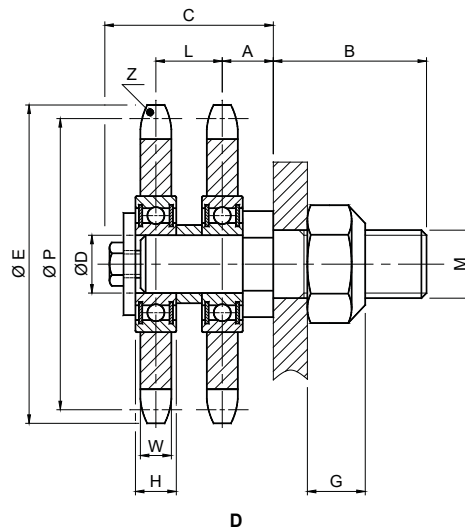
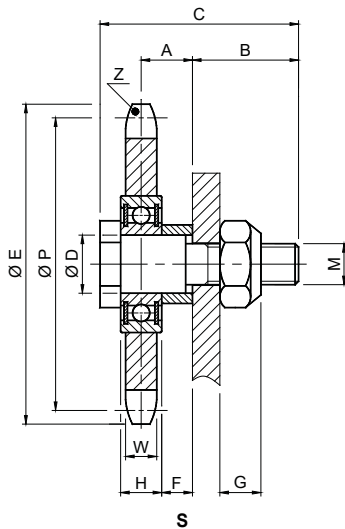


BALL BEARINGS - CUSCINETTI A SFERA

| Type / <i>Tipo</i> | Cod. N° | d | D | A | B | Weight <i>Peso</i> (kg) |
|--------------------|----------|--------------------------------------|----|----|------|----------------------------|
| 203 KRR AH 02 INOX | BU008536 | 16 ^{+0.13} _{+0.26} | 40 | 12 | 18.3 | 0,082 |
| 204 KRR | BU008531 | 20 ^{+0.10} _{-0.00} | 47 | 14 | 17,7 | 0,115 |
| 205 KRR | BU008534 | 25 ^{+0.00} _{-0.01} | 52 | 15 | 21,0 | 0,149 |



Type - *Tipo*: PTF


 MATERIALS Steel.

 MATERIALI Acciaio.
Simplex - *Semplice* (S)

| Type <i>Tipo</i> | Cod. N° | Catena Chain | A | B | C | ØD | F | G | H | M | ØE | ØP | W | Z | Weight Peso (kg) |
|---------------------|----------|-----------------|------|------|-----|----|------|----|----|-----|--------|--------|------|----|---------------------|
| PTF 03 B1 | PT010010 | 5mm | 7 | 15 | 28 | 6 | 4 | 6 | 6 | M 6 | 29.00 | 27.20 | 2.3 | 17 | 0.100 |
| PTF 04 B1 | PT010011 | 6mm | 7 | 15 | 28 | 6 | 4 | 6 | 6 | M 6 | 31.10 | 28.86 | 2.6 | 15 | 0.110 |
| PTF 05 B1 | PT010012 | 8mm | 7.5 | 16 | 30 | 8 | 4 | 8 | 7 | M 8 | 39.20 | 35.95 | 2.8 | 14 | 0.120 |
| PTF 06 B1 | PT010013 | 3/8" x 7/32" | 12 | 22 | 44 | 12 | 7 | 10 | 10 | M10 | 55.50 | 51.83 | 5.3 | 17 | 0.135 |
| PTF 081.1 | PT010014 | 1/2" x 1/8" | 12 | 22 | 44 | 12 | 7 | 10 | 10 | M10 | 59.40 | 53.06 | 3.0 | 13 | 0.140 |
| PTF 083.1 | PT010015 | 1/2" x 3/16" | 12 | 22 | 44 | 12 | 7 | 10 | 10 | M10 | 59.40 | 53.06 | 4.5 | 13 | 0.145 |
| PTF 08 B1 | PT010016 | 1/2" x 5/16" | 15 | 26 | 53 | 17 | 9 | 12 | 12 | M12 | 74.00 | 69.11 | 7.2 | 17 | 0.280 |
| PTF 10 B1 | PT010017 | 5/8" x 3/8" | 15 | 26 | 53 | 17 | 9 | 12 | 12 | M12 | 88.30 | 81.37 | 9.1 | 16 | 0.410 |
| PTF 12 B1 | PT010018 | 3/4" x 7/16" | 15 | 26 | 53 | 17 | 9 | 12 | 13 | M12 | 93.80 | 85.61 | 11.1 | 14 | 0.490 |
| PTF 16 B1 | PT010019 | 1" x 17.02 mm | 24.8 | 28.2 | 66 | 20 | 17.8 | 17 | 14 | M20 | 109.70 | 98.14 | 16.2 | 12 | 0.960 |
| PTF 20 B1 | PT010020 | 1"1/4 x 3/4" | 40 | 50 | 115 | 30 | 30.5 | 21 | 19 | M24 | 137.00 | 122.68 | 18.5 | 12 | 2.350 |
| PTF 24 B1 | PT010021 | 1"1/2 x 1" | 50 | 74 | 155 | 40 | 38.5 | 29 | 23 | M36 | 161.00 | 147.22 | 24.1 | 12 | 3.250 |

Duplex - *Doppio* (S)

| Type <i>Tipo</i> | Cod. N° | Catena Chain | A | B | C | ØD | F | G | H | M | ØE | ØP | W | Z | Weight Peso (kg) |
|---------------------|----------|-----------------|----|----|------|----|----|----|-------|-----|--------|-------|------|----|---------------------|
| PTF 06 B2 | PT010030 | 3/8" x 7/32" | 12 | 35 | 33 | 12 | 12 | 10 | 10.24 | M12 | 55.50 | 51.83 | 5.3 | 17 | 0.235 |
| PTF 08 B2 | PT010031 | 1/2" x 5/16" | 15 | 45 | 44 | 17 | 17 | 12 | 13.92 | M18 | 74.00 | 69.11 | 7.2 | 17 | 0.600 |
| PTF 10 B2 | PT010032 | 5/8" x 3/8" | 15 | 45 | 46.6 | 17 | 17 | 12 | 16.59 | M20 | 88.30 | 81.37 | 9.1 | 16 | 0.900 |
| PTF 12 B2 | PT010033 | 3/4" x 7/16" | 15 | 45 | 49.5 | 17 | 17 | 12 | 19.46 | M20 | 93.80 | 85.61 | 11.1 | 14 | 1.100 |
| PTF 16 B2 | PT010034 | 1" x 17.02 mm | 24 | 55 | 71.8 | 20 | 21 | 14 | 31.88 | M24 | 109.70 | 98.14 | 16.2 | 12 | 2.000 |

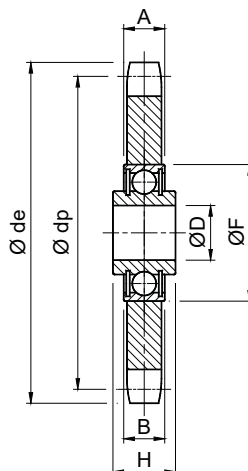
Type - *Tipo*: PTX

USE Stainless steel idler sprockets
Pignoni tendicatena INOX



MATERIALS Stainless Steel

MATERIALI Acciaio INOX.



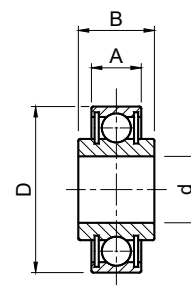
| Type <i>Tipo</i> | Cod. N° | Chain <i>Catena</i> | Z | Ø de | Ø dp | A | B | Ø D | Ø F | H | Weight <i>Peso</i> (kg) |
|---------------------|----------|------------------------|----|------|-------|------|----|----------------------------------------|-----|------|----------------------------|
| PTX 1-21 INOX | TB001827 | 3/8" x 7/32" | 21 | 68.0 | 63.90 | 5.3 | 12 | 16 ^{+0.26} / _{+0.13} | 40 | 18.3 | 0.17 |
| PTX 2-16 INOX | TB001830 | 1/2" x 5/16" | 16 | 69.5 | 65.10 | 7.2 | 12 | 16 ^{+0.26} / _{+0.13} | 40 | 18.3 | 0.18 |
| PTX 2-18 INOX | TB001832 | 1/2" x 5/16" | 18 | 77.8 | 73.14 | 7.2 | 12 | 16 ^{+0.26} / _{+0.13} | 40 | 18.3 | 0.23 |
| PTX 3-17 INOX | TB001836 | 5/8" x 3/8" | 17 | 93.0 | 86.39 | 9.1 | 12 | 16 ^{+0.26} / _{+0.13} | 40 | 18.3 | 0.36 |
| PTX 4-15 INOX | TB001839 | 3/4" x 7/16" | 15 | 99.8 | 91.63 | 11.1 | 12 | 16 ^{+0.26} / _{+0.13} | 40 | 18.3 | 0.46 |



STAINLESS STEEL BALL BEARINGS - CUSCINETTI A SFERA INOX



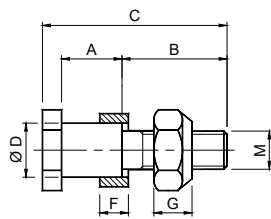
| Type / <i>Tipo</i> | Cod. N° | d | D | A | B | Weight <i>Peso</i> (kg) |
|--------------------|----------|----------------------------------------|----|----|------|----------------------------|
| 203 KRR AH 02 INOX | BU008536 | 16 ^{+0.13} / _{+0.26} | 40 | 12 | 18.3 | 0.082 |



**APPLICATION EXAMPLES
ESEMPI DI APPLICAZIONE**

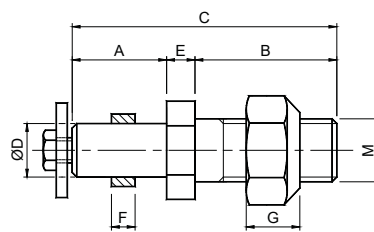


Type - *Tipo*: AXTP



S

 **MATERIALS** Steel.
TREATMENTS Zinc plated.



D

 **MATERIALI** Acciaio.
TRATTAMENTI Zincatura.

Simplex - *Semplice* (S)

| Type <i>Tipo</i> | Cod. N° | A | B | C | ØD | F | G | M | Weight Peso (kg) |
|---------------------|----------|------|------|-----|----|------|----|-----|---------------------|
| AXPTM06 | PT010110 | 10 | 15 | 28 | 6 | 4 | 6 | M6 | 0.040 |
| AXPTM08 | PT010111 | 11 | 16 | 30 | 8 | 4 | 8 | M8 | 0.050 |
| AXPTM10 | PT010112 | 16.5 | 22.5 | 44 | 12 | 7 | 10 | M10 | 0.060 |
| AXPTM12 | PT010113 | 20 | 27 | 53 | 17 | 9 | 12 | M12 | 0.100 |
| AXPTM20 | PT010114 | 31 | 29 | 66 | 20 | 17.8 | 17 | M20 | 0.240 |
| AXPTM24 | PT010115 | 47.5 | 52 | 115 | 30 | 30.5 | 21 | M24 | 0.300 |
| AXPTM36 | PT010116 | 59.5 | 76 | 155 | 40 | 38.5 | 29 | M36 | 0.500 |

Duplex - *Doppio* (D)

| Type <i>Tipo</i> | Cod. N° | A | B | C | ØD | E | F | G | M | Weight Peso (kg) |
|---------------------|----------|------|----|------|----|----|------|----|-----|---------------------|
| AXPT06B2 | PT010117 | 19.5 | 35 | 61.5 | 12 | 7 | - | 12 | M12 | 0.085 |
| AXPT08B2 | PT010118 | 24.5 | 45 | 78.5 | 17 | 9 | 2 | 17 | M18 | 0.240 |
| AXPT10B2 | PT010119 | 27 | 45 | 81 | 17 | 9 | 4.6 | 17 | M20 | 0.280 |
| AXPT12B2 | PT010120 | 30 | 45 | 84 | 17 | 9 | 7.5 | 17 | M20 | 0.320 |
| AXPT16B2 | PT010121 | 44 | 55 | 116 | 20 | 17 | 17.8 | 21 | M24 | 0.560 |

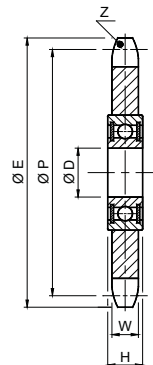
Type - *Tipo*: PF


 **MATERIALS** Steel.

NOTA: On specific request, you can have the pinions with different number of teeth compared to those indicated in the table.

 **MATERIALI** Acciaio.

NOTA Su richiesta è possibile avere pignoni con numero di denti diverso da quello indicato in tabella.



| Type <i>Tipo</i> | Cod. N° | Chain Catena | ØD | H | ØE | ØP | W | Z | Weight Peso (kg) |
|---------------------|----------|-----------------|----|----|--------|--------|------|----|---------------------|
| PF 03-17 | PT010210 | 5 mm | 6 | 6 | 29.00 | 27.20 | 2.3 | 17 | 0.060 |
| PF 04-15 | PT010211 | 6 mm | 6 | 6 | 31.10 | 28.86 | 2.6 | 15 | 0.070 |
| PF 05-14 | PT010212 | 8 mm | 8 | 7 | 39.20 | 35.95 | 2.8 | 14 | 0.070 |
| PF 06-17 | PT010213 | 3/8" x 7/32" | 12 | 10 | 55.50 | 51.83 | 5.3 | 17 | 0.075 |
| PF 081-13 | PT010214 | 1/2" x 1/8" | 12 | 10 | 59.40 | 53.06 | 3.0 | 13 | 0.080 |
| PF 083-13 | PT010215 | 1/2" x 3/16" | 12 | 10 | 59.40 | 53.06 | 4.5 | 13 | 0.085 |
| PF 08-17 | PT010216 | 1/2" x 5/16" | 17 | 12 | 74.00 | 69.11 | 7.2 | 17 | 0.180 |
| PF 10-16 | PT010217 | 5/8" x 3/8" | 17 | 12 | 88.30 | 81.37 | 9.1 | 16 | 0.310 |
| PF 12-14 | PT010218 | 3/4" x 7/16" | 17 | 13 | 93.80 | 85.61 | 11.1 | 14 | 0.390 |
| PF 16-12 | PT010219 | 1" x 17.02 mm | 20 | 14 | 109.70 | 98.14 | 16.2 | 12 | 0.720 |
| PF 20-12 | PT010220 | 1"1/4 x 3/4" | 30 | 19 | 137.00 | 122.68 | 18.5 | 12 | 2.050 |
| PF 24-12 | PT010221 | 1"1/2 x 1" | 40 | 23 | 161.00 | 147.22 | 24.1 | 12 | 2.750 |